



**Many possibilities.
One system.**

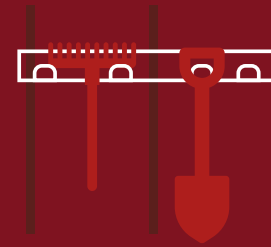
Zuluna Standard Metal Houses



Highlights



RAL 9007 or RAL 7016



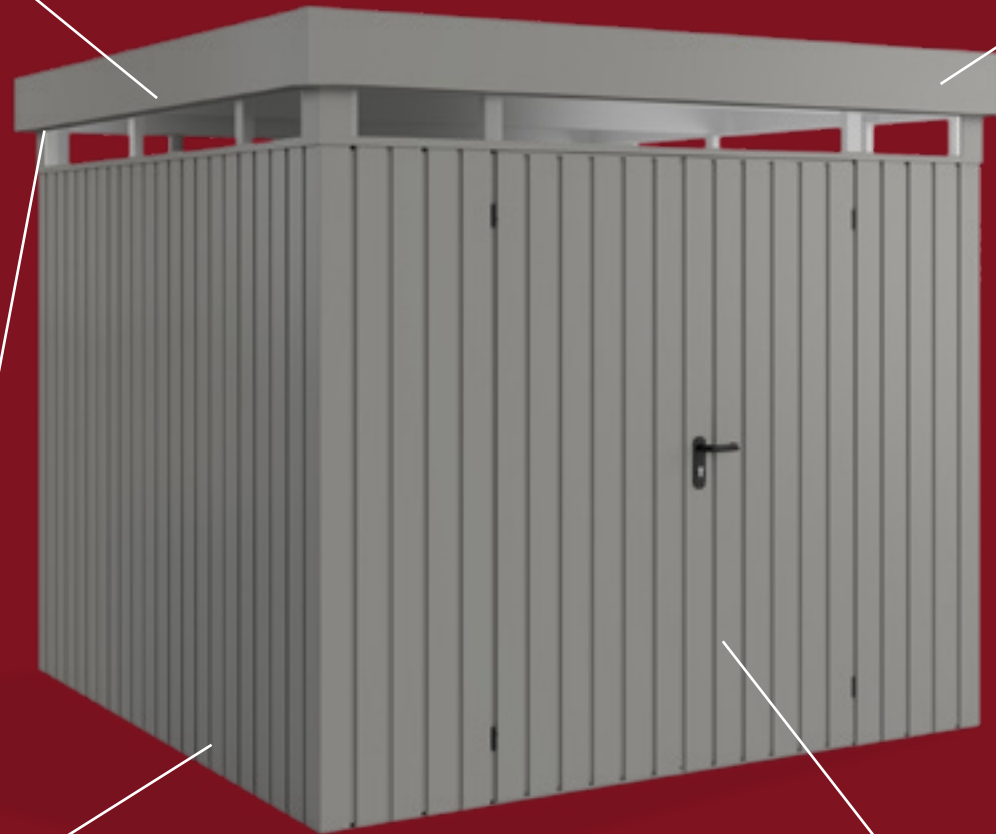
Many accessories available



With light strip or without



4 sizes



With single doors (ET)
or double doors (DT)





TOOL SHEDS

ZFD-4-ET-RAL9007

External wall dimensions	166 x 214 cm
External roof dimensions	181 x 229 cm
Ridge height	220 cm
Door dimensions	93,8 x 200 cm
Color	RAL9007
Door handle	Plastic (black)
Roof area	4,14 m ²
Floor area	4,14 m ²

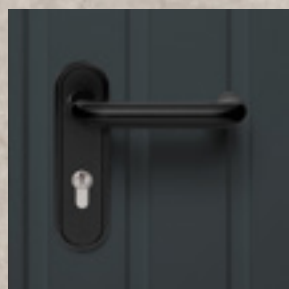


ZFD-4-ET-RAL7016

RAL7016

ZFD-4-LB-ET-RAL7016

External wall dimensions	166 x 214 cm
External roof dimensions	181 x 229 cm
Ridge height	239 cm
Door dimensions	93,8 x 200 cm
Color	RAL7016
Door handle	Plastic (black)
Roof area	4,14 m ²
Floor area	4,14 m ²



ZFD-4-LB-ET-RAL9007

RAL9007



ZFD-10-ET-RAL9007

External wall dimensions	262 x 262 cm
External roof dimensions	277 x 277 cm
Ridge height	220 cm
Door dimensions	93,8 x 200 cm
Color	RAL9007
Door handle	Plastic (black)
Roof area	7,67 m ²
Floor area	6,86 m ²



ZFD-10-ET-RAL7016

RAL7016

ZFD-10-DT-RAL7016

External wall dimensions	262 x 262 cm
External roof dimensions	277 x 277 cm
Ridge height	220 cm
Door dimensions	141,5 x 200 cm
Color	RAL7016
Door handle	Plastic (black)
Roof area	7,67 m ²
Floor area	6,86 m ²



ZFD-10-DT-RAL9007

RAL9007

ZFD-10-LB-ET-RAL7016

External wall dimensions	262 x 262 cm
External roof dimensions	277 x 277 cm
Ridge height	239 cm
Door dimensions	93,8 x 200 cm
Color	RAL7016
Door handle	Plastic (black)
Roof area	7,67 m ²
Floor area	6,86 m ²



ZFD-10-LB-ET-RAL9007

RAL9007

ZFD-10-LB-DT-RAL9007

External wall dimensions	262 x 262 cm
External roof dimensions	277 x 277 cm
Ridge height	239 cm
Door dimensions	141,5 x 200 cm
Color	RAL9007
Door handle	Plastic (black)
Roof area	7,67 m ²
Floor area	6,86 m ²



ZFD-10-LB-DT-RAL7016

RAL7016



ZFD-13-ET-RAL9007

External wall dimensions	262 x 310 cm
External roof dimensions	277 x 325 cm
Ridge height	220 cm
Door dimensions	93,8 x 200 cm
Color	RAL9007
Door handle	Plastic (black)
Roof area	9 m ²
Floor area	8,12 m ²



ZFD-13-ET-RAL7016

RAL7016

ZFD-13-DT-RAL7016

External wall dimensions	262 x 310 cm
External roof dimensions	277 x 325 cm
Ridge height	220 cm
Door dimensions	141,5 x 200 cm
Color	RAL7016
Door handle	Plastic (black)
Roof area	9 m ²
Floor area	8,12 m ²



ZFD-13-DT-RAL9007

RAL9007

ZFD-13-LB-ET-RAL9007

External wall dimensions	262 x 310 cm
External roof dimensions	277 x 325 cm
Ridge height	239 cm
Door dimensions	93,8 x 200 cm
Color	RAL9007
Door handle	Plastic (black)
Roof area	9 m ²
Floor area	8,12 m ²



ZFD-13-LB-ET-RAL7016

RAL7016

ZFD-13-LB-DT-RAL7016

External wall dimensions	262 x 310 cm
External roof dimensions	277 x 325 cm
Ridge height	239 cm
Door dimensions	141,5 x 200 cm
Color	RAL7016
Door handle	Plastic (black)
Roof area	9 m ²
Floor area	8,12 m ²



ZFD-13-LB-DT-RAL9007

RAL9007

ZFD-14-ET-RAL7016

External wall dimensions	310 x 310 cm
External roof dimensions	325 x 325 cm
Ridge height	220 cm
Door dimensions	93,8 x 200 cm
Color	RAL7016
Door handle	Plastic (black)
Roof area	10,56 m ²
Floor area	9,61 m ²



ZFD-14-ET-RAL9007

RAL9007

ZFD-14-DT-RAL7016

External wall dimensions	310 x 310 cm
External roof dimensions	277 x 325 cm
Ridge height	220 cm
Door dimensions	141,5 x 200 cm
Color	RAL7016
Door handle	Plastic (black)
Roof area	10,56 m ²
Floor area	9,61 m ²



ZFD-14-DT-RAL9007

 RAL9007

ZFD-14-LB-ET-RAL7016

External wall dimensions	310 x 310 cm
External roof dimensions	325 x 325 cm
Ridge height	239 cm
Door dimensions	93,8 x 200 cm
Color	RAL7016
Door handle	Plastic (black)
Roof area	10,56 m ²
Floor area	9,61 m ²



ZFD-14-LB-ET-RAL9007

RAL9007

ZFD-14-LB-DT-RAL9007

External wall dimensions	310 x 310 cm
External roof dimensions	325 x 325 cm
Ridge height	239 cm
Door dimensions	141,5 x 200 cm
Color	RAL9007
Door handle	Plastic (black)
Roof area	10,56 m ²
Floor area	9,61 m ²



ZFD-14-LB-DT-RAL7016

RAL7016

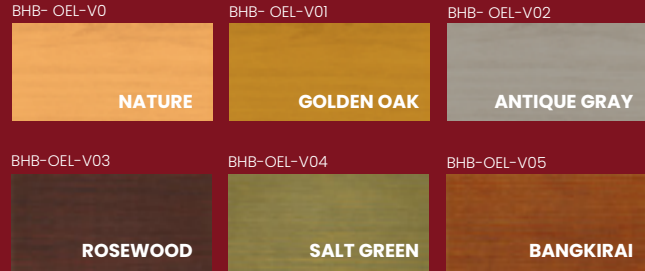


VARIO

**Too much metal? Discover the new ZULUNA Vario now!
Choose from several possible claddings
made of wood, HPL, MDF board, or AluComposite.**

ICON

It is a ThermoWood cladding (pine). Thickness 19 mm (tongue and groove). Optional impregnation with 6 different oils:



 OR ALSO **RAL** COLOR ON REQUEST



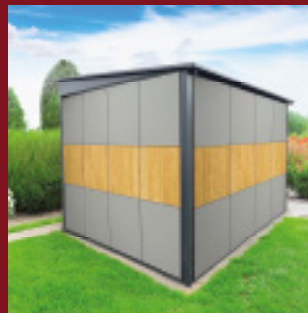
What is ThermoWood?

ThermoWood, also called thermally modified wood, is wood that is treated by heating it in a low-oxygen environment to improve its properties. This treatment increases the durability, resistance to moisture and pests, and the dimensional stability of the wood.



ODYSSEY

It is an HPL panel cladding



Available in multiple colors and wood finishes.

What are HPL panels?

HPL panels, also called high-pressure laminates, are laminate panels made of multiple layers of paper or cellulose, which are impregnated with resin and pressed together under high pressure and high temperature. This makes them very durable and versatile

SYMPHONY

It is an ALU-composite cladding



Available in multiple colors



What is an ALU-composite panel ?

The ALU-composite panel is an innovative material consisting of two 0.5 mm thick aluminum sheets and a mineral-filled core, which is either non-combustible STACBOND A2 or fire-retardant STACBOND FR, coated with special weather-resistant paints



HARMONY

It is a Tricoya panel.



Available in any RAL color.



Engraving of various motifs available for an additional cost.

What is a Tricoya panel?

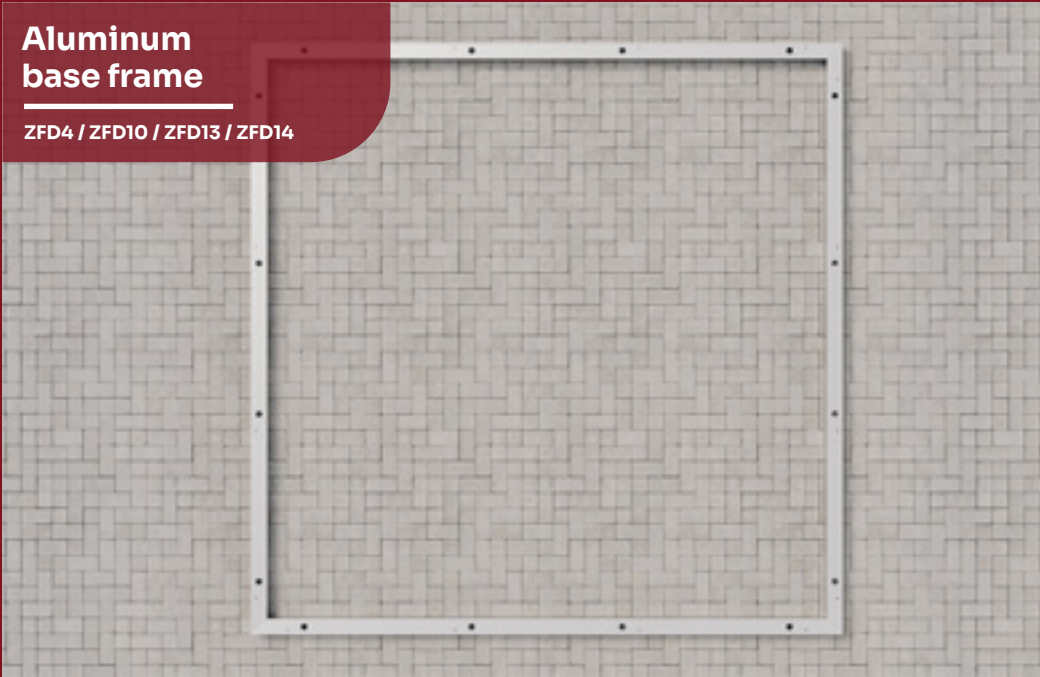
It is an exterior panel suitable for use above ground, partially, or fully underground. The panel is also ideal for use in extremely damp areas such as saunas, showers, kitchens, or basements. Tricoya is available in various thicknesses and dimensions, as well as in a polished finish. The unique combination of acetylated wood fiber and Tricoya production technology offers a wealth of new design and application possibilities.



ACCESSORIES

Aluminum base frame

ZFD4 / ZFD10 / ZFD13 / ZFD14



Door threshold ramp

DT / ET



Vertical bicycle stand

Length: 190 cm



Short horizontal bicycle stand

Width x Depth: 48 x 21 cm



Long horizontal bicycle stand

Width x Depth: 96 x 21 cm



Floor profiles

ZFD4 / ZFD10 / ZFD13 / ZFD14



Clothes hook

Width x Depth x Height: 2,7 x 3,6 x 4,5 cm



Short shelf

Width x Depth: 48 x 35 cm



Long shelf

Width x Depth: 96 x 25 cm



Short folding table

Width x Depth: 50 x 72 cm



Long folding table

Width x Depth: 98 x 52 cm



Short device holder

Width: 48 cm



Long device holder

Width: 96 cm



Shelf ledge

2 pieces / Length: 196 cm



Rainwater drainage hose set

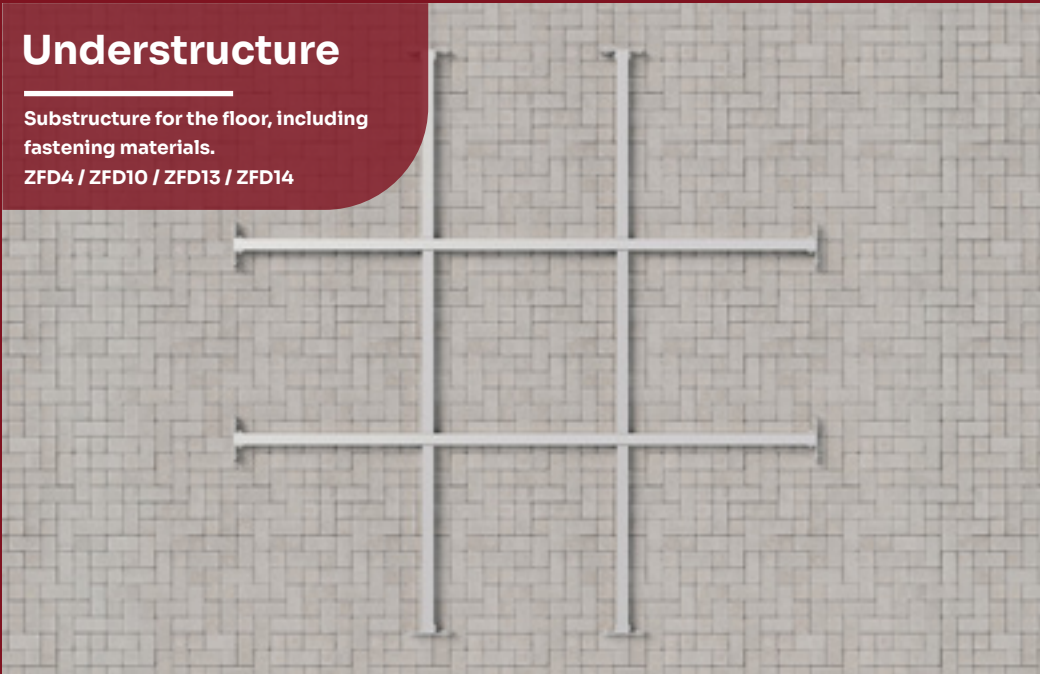
Hose set 1 1/4 inch (set of 2) including mounting kit.



Understructure

Substructure for the floor, including fastening materials.

ZFD4 / ZFD10 / ZFD13 / ZFD14



Optional wooden floor available at an additional cost !

Advantages of our wooden floor

- ✓ The house can be built on a pier foundation – a concrete slab is not required
- ✓ Warm climate in the house
- ✓ Lower price than a metal floor and still high stability.
- ✓ No moisture in the house
- ✓ Continuous metal coverings in house color for the joists.
- ✓ Can be covered with various materials.



WEB

Visit our website to get more information!

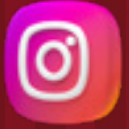


Social Media

Visit our social media now and discover even more inspiration!



zulunabhb



zuluna_official

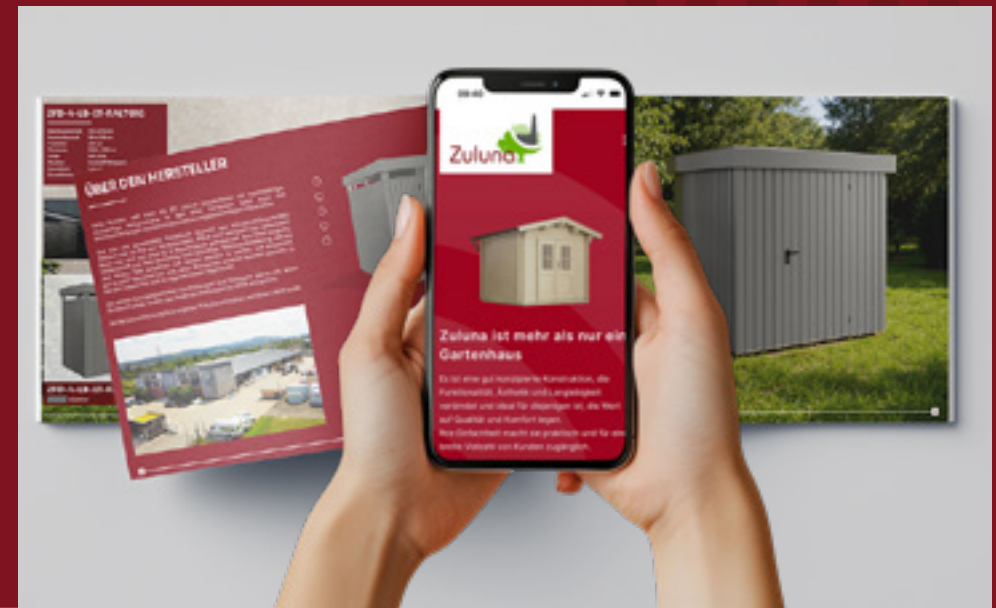


zuluna_official

Would you like your house to be featured in our catalog?

Then send images to

marketing@bertsch-holzbau.eu





Discover our variety and individuality
online at:

 www.bertsch-holzbau.eu/zuluna

 [zuluna_official](https://www.instagram.com/zuluna_official)

 [zulunabhb](https://www.facebook.com/zulunabhb)



In cooperation with **HÖRMANN**



Dealer address

Comprehensive information about our products is available from your authorized dealer! The contributions, images, and drawings in this brochure are protected by copyright. Reproduction, even in part, is strictly prohibited and requires our express written permission. Color deviations from the original shades are due to printing processes. We reserve the right to make technical changes, correct errors, and implement interim model modifications; no entitlement to a specific model exists. Illustrations may show optional accessories that are not included in the delivery. All depicted models are standard types and do not allow modifications. Drawings are not to scale.

All models are delivered in raw condition (unpainted, without roof covering).